

Manchester's COVID-19 10 Point Action Plan – August/September 2020

Manchester Health and Wellbeing Board – 26 August 2020

David Regan – Director of Public Health

1. Ensure that strategic and operational decisions in respect of COVID-19 are informed consistently by high quality data and intelligence

We have:

- Produced a Manchester COVID-19 Early Warning Dashboard to inform local analysis
- Collated a weekly summary of key metrics every Wednesday for the Manchester City Council website, there is also a read across to the Greater Manchester COVID-19 Dashboard which is discussed at the GM Mayor's COVID Committee on the same day

We will:

- Continue to produce a daily COVID-19 data update and the latest available information up to Tuesday 25th August is provided in the next set of slides

7 day rate of positive cases per 100,000 population (Pillar 1 & 2): GM

	Week ending					
	11/07/20	17/07/20	24/07/20	01/08/20	08/08/20	15/08/20
Manchester	13.4	13.4	24.6	34.4	37.3	47.6
Bolton						
Bolton	17.7	12.2	17.0	23.0	27.5	25.4
Bury	3.7	9.9	11.0	20.4	26.7	33.0
Oldham	17.3	14.8	57.4	57.8	109.7	83.1
Rochdale	40.5	46.8	36.4	29.7	43.2	39.6
Salford	14.7	11.2	18.5	27.8	27.4	36.7
Stockport	4.8	6.8	15.7	25.6	26.6	25.1
Tameside	11.0	5.3	16.8	26.9	36.6	29.1
Trafford	7.2	8.8	36.2	33.7	23.6	29.1
Wigan	4.0	4.3	7.0	7.6	7.3	9.4
GM	13.1	12.8	23.4	28.6	35.4	35.3

7 day rate of positive cases per 100,000 population: Other Local Authorities

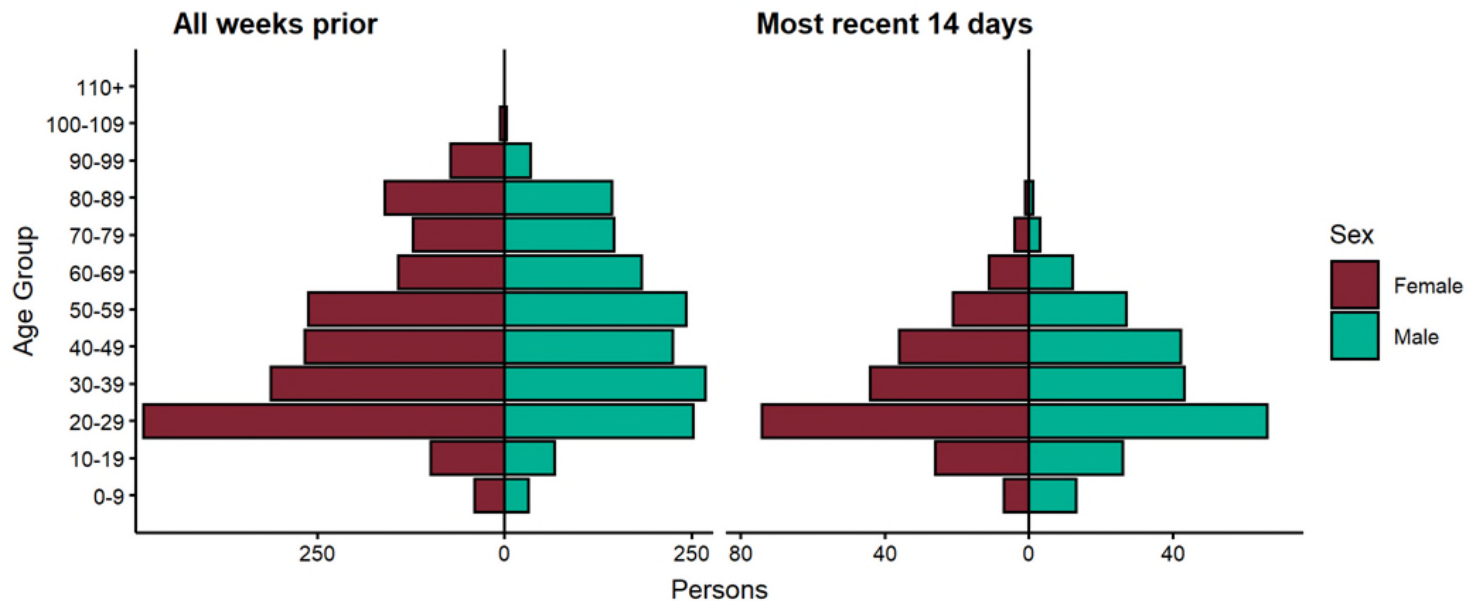
Rank (Highest incidence)	Local Authority	Rate per 100,000 population			
		Prior 7 days*	Most recent 7 days**	Absolute difference	Relative change
1	Oldham	112.9	73.4	-39.5	Decrease
2	Pendle	109.4	67.8	-41.6	Decrease
3	Blackburn w Darien	88.6	59.1	-29.5	Decrease
4	Leicester	70.4	53.8	-16.6	Decrease
5	Swindon	39.2	46.8	7.6	=
7	Manchester	42.4	45.8	3.4	=

* Prior 7 days = 05/08/2020 to 11/08/2020

** Most recent 7 days = 12/08/2020 to 18/08/2020

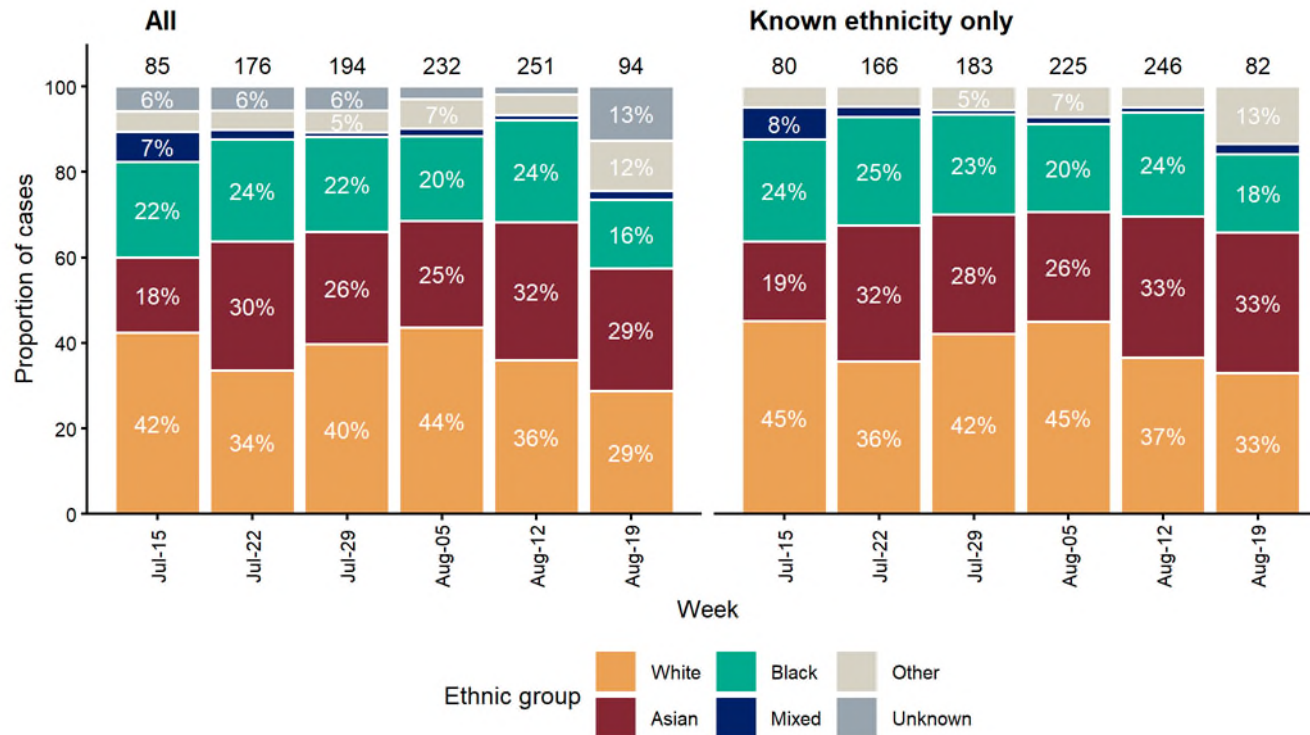
Demographic characteristics of confirmed cases

Age-sex pyramid for confirmed cases in past 14 days (9 August 2020 to 22 August 2020) and all weeks prior (3 March 2020 to 8 August 2020)



Demographic characteristics of confirmed cases

Weekly distribution of ethnic groups among confirmed cases in Manchester, last 6 weeks. *Most recent bar is 4 days subject to reporting delay, all other bars are complete 7 day periods. Denominator printed on top of bars*



Testing and positivity rates: GM

	7 day total number of tests per 100,000 population		Percentage of tests that are positive	
	Previous Week (08/08/2020)	Latest Week (15/08/2020)	Previous Week (08/08/2020)	Latest Week (15/08/2020)
Manchester	1,541	1,335	2.9%	4.2%
Bolton	1,633	1,275	2.0%	2.5%
Bury	1,539	1,395	2.1%	3.0%
Oldham	2,384	2,137	5.4%	4.3%
Rochdale	2,415	1,837	2.2%	2.6%
Salford	1,583	1,418	2.0%	2.9%
Stockport	1,896	1,666	1.3%	1.2%
Tameside	2,065	1,529	1.9%	2.0%
Trafford	1,756	1,368	1.5%	2.2%
Wigan	1,331	1,099	0.5%	0.9%
Gtr Mcr	1,765	1,472	2.3%	2.7%

2. Increase access to and uptake of testing

We have:

- Successfully deployed Mobile Testing Units (MTUs) at FC United and the Ukrainian Cultural Centre throughout August
- Ensured capacity at the Etihad and Manchester Airport regional testing centres is utilised

We will:

- Stand up the five Local Testing Sites through a phased approach in collaboration with DHSC and Deloitte by Monday 14th September
- Scale up “Whole Home” testing for all adult care homes from 31st August

3. Increase local contact tracing and environmental health capacity to respond to local outbreaks

We have:

- Taken the lead role for all consequence management and contact tracing work with businesses that cover the hospitality sector as well as ongoing work with other employers including factories, offices, retail and public sector

We will:

- Submit proposals on Friday 28th August to Public Health England for the Manchester Local Enhanced Case Finding/Contact Tracing Service

4. Develop and implement community engagement plans for targeted work in specific areas and with specific groups

We have:

- Delivered a successful intensive community engagement plan in Cheetham/Crumpsall during the first few weeks of August that has provided a blueprint for hyper local work in other neighbourhoods
- Established the COVID-19 Health Equity Group - to ensure that we are able to reach and put in place appropriate engagement practices with those that are most at risk of contracting COVID-19

We will:

- Act on the data and intelligence available that suggests the following areas are the next 'hyper-local' areas of the city where a more targeted approach to community engagement will be undertaken over the next month:
 - New Islington and Miles Platting;
 - Ardwick and Levenshulme North;
 - Moss Side (building on work undertaken for the virtual Caribbean Carnival)

5. Further amplify key communication messages in relation to the new restrictions

We have:

- Designed and produced sets of materials that have been used as part of the hyper local work and these will be used across target neighbourhoods and sectors in Manchester

We will:

- Launch a new campaign with stronger messaging and images, reminding people in simple terms of the restrictions and their responsibilities as Manchester remains on the Government Watchlist
- Enhance the Greater Manchester COVID-19 September campaign with specific Manchester messages and with a focus on young people and younger working age adults

6. Inform the hospitality sector on the new guidance and regulations when they are agreed

We have:

- Conducted a joint operation between GMP and MCC Compliance and Enforcement Team targeting the hospitality sector in the city - **this is happening on a weekly basis**
- Taken enforcement action on premises who are repeatedly not complying with advice including the use of directions to close premises in the worst cases - **directions have been used twice up to 14 August 2020**

We will:

- Take swift enforcement and preventative action (e.g. warn and inform) against businesses and households that do not comply with the restrictions and publicise intent to act
- Ensure those businesses who are exemplars for COVID-19 secure working practices are recognised

7. Continue to support residents and patients who are clinically vulnerable and respond to the evolving guidance on shielding

We have:

- Written to all patients who are shielding advising them about the new restrictions
- Followed up with phone calls via primary care to all those that were in receipt of support from central government to understand support needs

We will:

- Continue to support this group of residents and patients who are confused by the mixed messages relating to parts of Greater Manchester and the country as a whole

8. Provide advice to organisers of events that were planned for August

We have:

- Delivered a safe Eid programme, whilst acknowledging the levels of anger and dissatisfaction with the timing of the announcement on the 30th July, that included prayers in local mosques and their adjacent outside space rather than the annual Platt Fields Park gathering
- Successfully redirected local communities to the online Manchester Caribbean Carnival

We will:

- Work with GMP and the Combined Authority, to deliver core messages via trusted partners such as LGBT Foundation and Manchester Pride about the August Bank Holiday weekend
- Prepare for September, with a number of events such as the Greater Manchester Run already cancelled, and other smaller scale events being reviewed

9. Plan now for the return of students and pupils to universities and schools in September

For Universities - we have:

- Agreed a plan of action with the Student Strategy Partnership;

We will:

- Agree the Local Outbreak Response Plan including contact tracing with the two Manchester universities and ensure that students register with a local address
- Work with Manchester Student Homes, particularly in relation to Off Campus accommodation and engagement with landlords and the local community

For Schools - we have:

- Produced a step by step guidance for schools on infection prevention and control including how to access support

We will:

- Implement a joint advice and engagement plan between the MCC Education and Public Health Teams

10. Consider the suite of contain measures currently being developed for Greater Manchester and apply them as necessary to the local situation in Manchester, ensuring collaboration with adjacent authorities

Greater Manchester have developed a framework for containment actions that can be used by localities depending on their rates of infection. Localities can also access the advice of the GM Expert Advisory Group, chaired by Dr Ruth Hussey (Independent Chair and former Chief Medical Officer for Wales).